

TOYOTA CAMRY



2024 TOYOTA CAMRY LE HYBRID 2.5L E-CVT

TECHNICAL FEATURES

ENGINE: 2.5L, 4-CYLINDERS

MAX OUTPUT: 215 HP (COMBINED)

MAX TORQUE: 221 NM /3600 - 5200 RPM

ELECTRONIC CONTINUOUS VARIABLE TRANSMISSION (E-CVT)

TIRES SIZE: 205/65R16

FUEL EFFICIENCY: 26.0 KM/L

FUEL TANK CAPACITY: 50L

EXTERIOR FEATURES

ALLOY WHEEL 16-INCH

LED HEADLAMP

LED DAYTIME RUNNING LIGHTS "DRL"

BODY COLORED & POWERED OUTSIDE VIEW MIRRORS

WITH SIDE TURN LIGHTS AND MANUAL RETRACTABLE

CHROME EXHAUST TIP

INTERIOR FEATURES

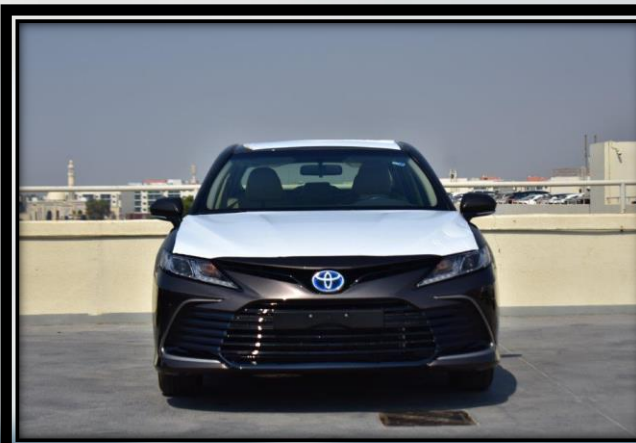
FABRIC SEATS

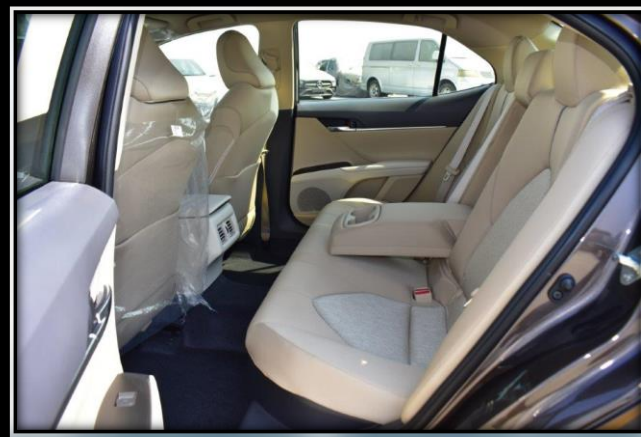
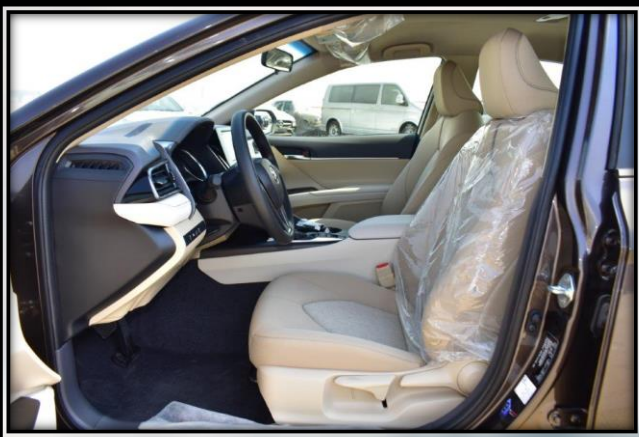
3-SPOKE URETHANE STEERING WHEEL WITH CONTROL

SWITCHES

AUTOMATIC CLIMATE CONTROL + REAR AC DUCT

40:60 REAR SPLIT SEATS WITH (ARM REST & CUPHOLDERS)





AUDIO & ENTERTAINMENT SYSTEM
7 INCH TOUCH SCREEN AUDIO SYSTEM WITH BT
APPLE CARPLAY SYSTEM
USB PORT
6 SPEAKERS

SAFETY & CONVENIENCE FEATURES
AIRBAG (DRIVER + FRONT PASSENGER)
SMART ENTRY SYSTEM WITH ENGINE START/STOP
(PUSH BUTTON)
REAR VIEW CAMERA
FRONT & REAR PARKING SENSORS
CRUISE CONTROL
WIRELESS CHARGER FOR SMARTPHONES (COMPATIBLE)
ELECTRIC PARKING BRAKE (EPB) + BRAKE HOLD
FUNCTION
3-MODE INTEGRATED DRIVING SYSTEM
TRUNK LINER (PLASTIC)
PREMIUM HORN
FLOOR MATS (CARPET)
SAFETY REGULATION KIT



[Visit Website Now](#)